

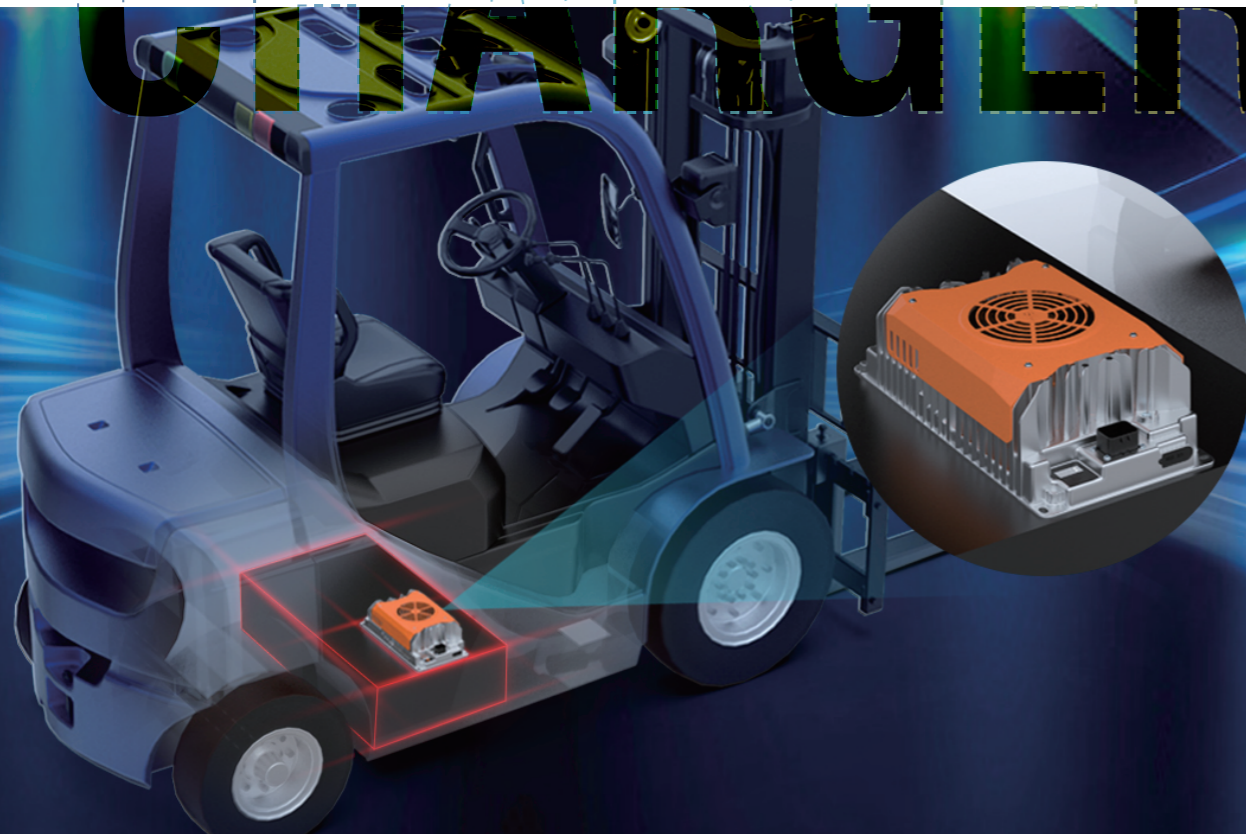
**Industrial** machinery Solution

**SIL**

SUNSTRONG INTERNATIONAL INDUSTRIAL CO., LTD.

## ON-BOARD CHARGER CATALOG

ON-BOARD CHARGER



**SUNSTRONG INTERNATIONAL INDUSTRIAL CO., LTD.**

+86 0769-82955666

[www.sunstrong.com](http://www.sunstrong.com)

Yang Mei Yuan 21, Sicun TangxiaTown, Dongguan City, Guangdong Province, China

## SCENARIO

The charger can charge both lead-acid batteries (wet, AGM, gel) and lithium batteries, and can be used worldwide, with advantages of high charging efficiency and high reliability.

## Model NO.:

SSC-400WNO-01 CH240170A

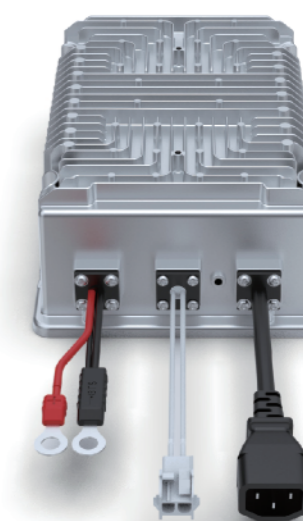
DC Output	24 VDC	24 VDC	48 VDC
Maximum DC output voltage	34V	34V	68V
Maximum DC output current	15A	17A	8A
Maximum DC output power	360W	400W	400W
Deep discharge recovery (minimum voltage)	3V		
Maximum C3 interlock signal current	5A		
Battery type	Lead acid (Wet / AGM / GEL), lithium		
Reverse polarity	Electronic protection with auto-reset		
Short circuit	Electronic current limit		

AC Input	
AC input voltage range	85-265 VAC
Nominal AC input voltage	100-240 VAC
Nominal AC input frequency	50 / 60 Hz
Maximum AC input current	4.4 A                      4.8 A
Nominal AC input current	4.0 A @ 100 VAC                      4.4 A @ 100 VAC
	1.7 A @ 230 VAC                      1.9 A @ 230 VAC
Power factor	>0.99 @ 120 VAC                      >0.98 @ 230 VAC

Regulatory	
Efficiency	CEC-400-2017-002
Safety	UL1564, CSA 107.2, EN 60335-2-29, AZ/NZS60335 (RSM)
Emissions	FCC Part 15 / ICES 003 Class A, EN55011, EN 61000-6-4
Immunity	EN 61000-3-2, EN 61000-3-3, EN 61000-6-2

Mechanical	
Dimensions	226MM*152MM*80MM
Weight	< 2.2 kg
AC input connector	IEC320 / C14 (requires country-specific cord)
DC output connector	M8 threaded fasteners for ring terminals
Service port	Sealed (IP66) USB 2.0 Host Port (Type A) with dust cover
Mounting holes	Allows for safe installation on shelf, wall or bulkhead
Cooling	Normal operation in any orientation with passive cooling

Environmental	
Enclosure	IP66 (NEMA4)
Mechanical shock & vibration	MIL-STD-810E
Working Humidity	10 - 90 % RH non-condensing
Storage Humidity	5-90 % RH non-condensing
Operating temperature	-40°C to +65°C (-40°F to 149°F)
Storage temperature	-40°C to +85°C (-40°F to 185°F)

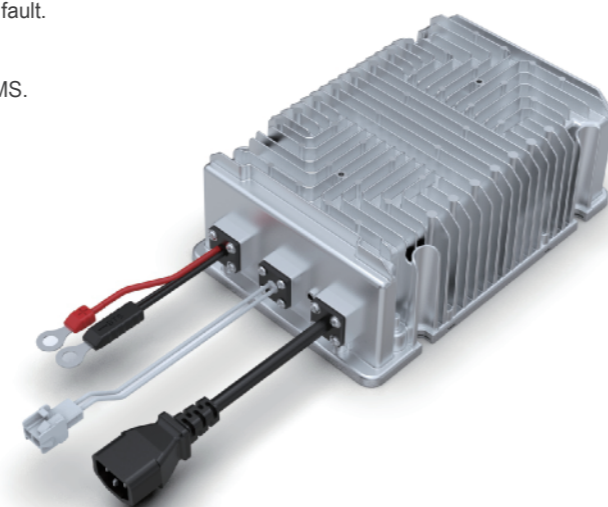


## 400W CHARGER

This 400W charger can charge both lead-acid batteries (wet, AGM, gel) and lithium batteries, and can be used worldwide, with advantages of high charging efficiency and high reliability.

### Usability Features

- \*High voltage and surge protection.
- \*Optional USB function for charge history, charge profile update and firmware upgrade.
- \*Digital display for AC voltage, charging status, battery status, error and fault.
- \*Auto-recharge for low voltage in maintenance mode.
- \*Built-in multiple charge profiles for different batteries.
- \*Optional CAN bus communication for machine integration or lithium BMS.
- \*Optional carrying handle.



### Application Field



## Model NO.:

SSC-650WNO-01 CH240271A

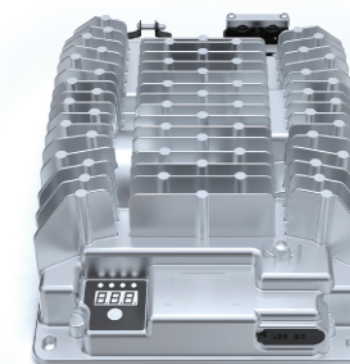
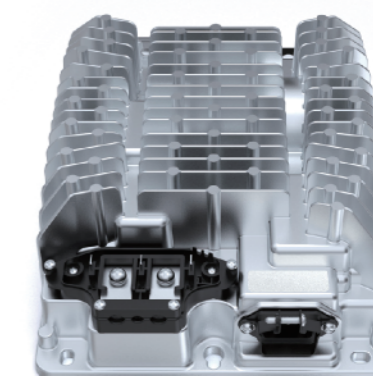
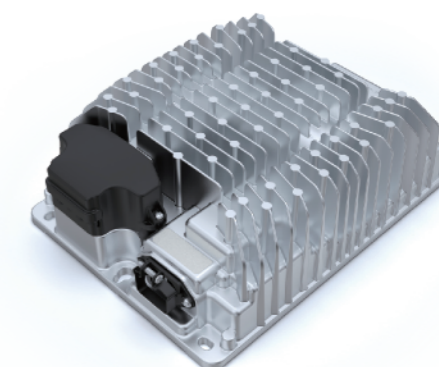
DC Output	24 VDC	36VDC	48 VDC
Maximum DC output voltage	34V	51V	68V
Maximum DC output current	27.1A	18.1A	13.5A
Maximum DC output power	650W		
Deep discharge recovery (minimum voltage)	3V	4.5V	6V
Maximum C3 interlock signal current	5A		
Battery type	Lead acid (Wet / AGM / GEL), lithium		
Reverse polarity	Electronic protection with auto-reset		
Short circuit	Electronic current limit		

AC Input	
AC input voltage range	85-265 VAC
Nominal AC input voltage	100-240 VAC
Nominal AC input frequency	50 / 60 Hz
Maximum AC input current	7.5 A
Nominal AC input current	7.3 A @ 100 VAC
	6.0 A @ 120 VAC
Power factor	3.1 A @ 230 VAC
	2.9 A @ 240 VAC
	>0.99 @ 120 VAC
	>0.98 @ 230 VAC

Regulatory	
Efficiency	CEC-400-2017-002
Safety	UL1564, CSA 107.2, EN 60335-2-29, AZ/NZS60335 (RSM)
Emissions	FCC Part 15 / ICES 003 Class A, EN55011, EN 61000-6-4
Immunity	EN 61000-3-2, EN 61000-3-3, EN 61000-6-2

Mechanical	
Dimensions	252MM*182MM*80MM
Weight	< 2.8 kg
AC input connector	IEC320 / C14 (requires country-specific cord)
DC output connector	M6 threaded fasteners for ring terminals
Service port	Sealed (IP66) USB 2.0 Host Port (Type A) with dust cover
Mounting holes	Allows for safe installation on shelf, wall or bulkhead
Cooling	Normal operation in any orientation with passive cooling

Environmental	
Enclosure	IP66 (NEMA4)
Mechanical shock & vibration	MIL-STD-810E
Working Humidity	10 - 90 % RH non-condensing
Storage Humidity	5-90 % RH non-condensing
Operating temperature	-40°C to +65°C (-40°F to 149°F)
Storage temperature	-40°C to +85°C (-40°F to 185°F)



## 650W CHARGER

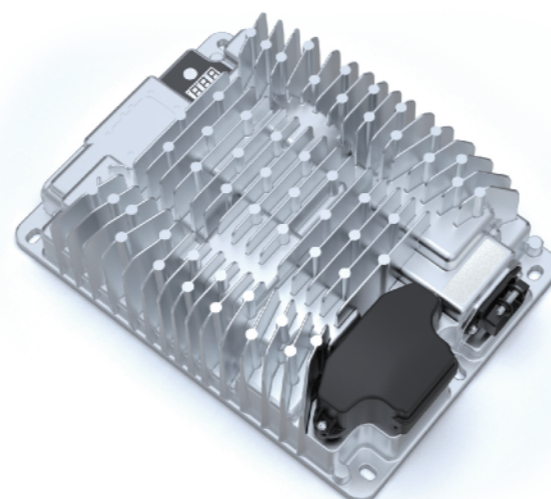
This 650W charger can charge both lead- acid batteries (wet, AGM, gel) and lithium batteries, and can be used worldwide, with advantages of high charging efficiency and high reliability

### Usability Features

- \*High voltage and surge protection.
- \*USB function for charge history, charge profile update and firmware upgrade.
- \*Digital display for AC voltage, charging status, battery status, error and fault.
- \*Auto-recharge for low voltage in maintenance mode.
- \*Built-in multiple charge profiles for different batteries.
- \*Optional CAN bus communication for machine integration or lithium BMS.
- \*Optional carrying handle.



### Application Field



## Model NO.:

SSC-900WNO-01 CH240360A

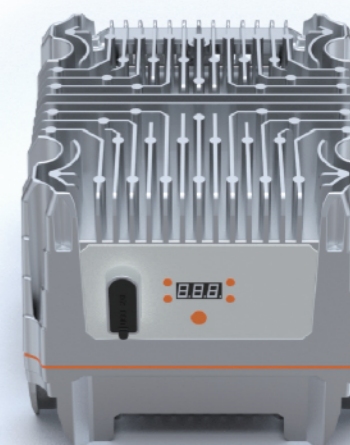
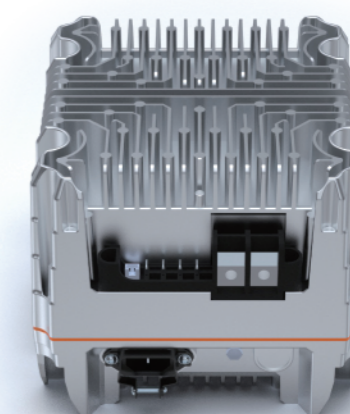
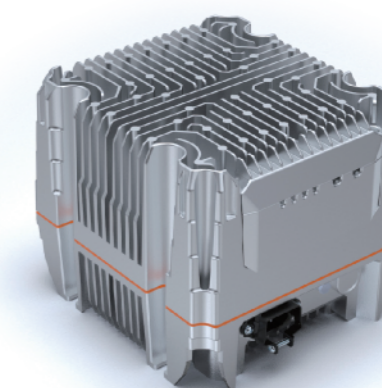
DC Output	24 VDC	24 VDC
Maximum DC output voltage	34 V	34 V
Maximum DC output current	30 A	36 A
Maximum DC output power	750W	900W
Deep discharge recovery (minimum voltage)	3V	
Maximum C3 interlock signal current	5A	
Battery type	Lead acid (Wet / AGM / GEL), lithium	
Reverse polarity	Electronic protection with auto-reset	
Short circuit	Electronic current limit	

AC Input		
AC input voltage range	85-265 VAC	
Nominal AC input voltage	100-240 VAC	
Nominal AC input frequency	50 / 60 Hz	
Maximum AC input current	9.5A	11.4A
Nominal AC input current	8.4 A @ 100 VAC	10.0 A @ 100 VAC
	3.6 A @ 230 VAC	4.3 A @ 230 VAC
Power factor	>0.99 @ 120 VAC	>0.98 @ 230 VAC

Regulatory	
Efficiency	CEC-400-2017-002
Safety	UL1564, CSA 107.2, EN 60335-2-29, AZ/NZS60335 (RSM)
Emissions	FCC Part 15 / ICES 003 Class A, EN55011, EN 61000-6-4
Immunity	EN 61000-3-2, EN 61000-3-3, EN 61000-6-2

Mechanical	
Dimensions	203MM*180MM*160MM
Weight	< 4.0 kg
AC input connector	IEC320 / C14 (requires country-specific cord)
DC output connector	M8 threaded fasteners for ring terminals
Service port	Sealed (IP66) USB 2.0 Host Port (Type A) with dust cover
Mounting holes	Allows for safe installation on shelf, wall or bulkhead
Cooling	Normal operation in any orientation with passive cooling

Environmental	
Enclosure	IP66 (NEMA4)
Mechanical shock & vibration	MIL-STD-810E
Working Humidity	10 - 90 % RH non-condensing
Storage Humidity	5-90 % RH non-condensing
Operating temperature	-40°C to +65°C (-40°F to 149°F)
Storage temperature	-40°C to +85°C (-40°F to 185°F)



## 900W CHARGER

This 900W charger can charge both lead-acid batteries (wet, AGM, gel) and lithium batteries, and can be used worldwide, with advantages of high charging efficiency and high reliability.

### Usability Features

- \*High voltage and surge protection.
- \*USB function for charge history, charge profile update and firmware upgrade.
- \*Digital display for AC voltage, charging status, battery status, error and fault.
- \*Auto-recharge for low voltage in maintenance mode.
- \*Built-in multiple charge profiles for different batteries.
- \*Optional CAN bus communication for machine integration or lithium BMS.
- \*Optional carrying handle.



### Application Field



## Model NO.:

SSC-1200WNO-01 CH240500A

DC Output	24 VDC	36VDC	48 VDC
Maximum DC output voltage	34V	51V	68V
Maximum DC output current	50.0A	33.3A	25.0 A
Maximum DC output power	1200W		
Deep discharge recovery (minimum voltage)	3V	4.5V	6V
Maximum C3 interlock signal current	5A		
Battery type	Lead acid (Wet / AGM / GEL), lithium		
Reverse polarity	Electronic protection with auto-reset		
Short circuit	Electronic current limit		

AC Input	
AC input voltage range	85-265 VAC
Nominal AC input voltage	100-240 VAC
Nominal AC input frequency	50 / 60 Hz
Maximum AC input current	14.5 A
Nominal AC input current	13.4 A @ 100 VAC
	11.1 A @ 120 VAC
Power factor	5.7 A @ 230 VAC
	5.5 A @ 240 VAC
Power factor	>0.99 @ 120 VAC
	>0.98 @ 230 VAC

Regulatory	
Efficiency	CEC-400-2017-002
Safety	UL1564, CSA 107.2, EN 60335-2-29, AZ/NZS60335 (RSM)
Emissions	FCC Part 15 / ICES 003 Class A, EN55011, EN 61000-6-4
Immunity	EN 61000-3-2, EN 61000-3-3, EN 61000-6-2

Mechanical	
Dimensions	335MM*179MM*102MM
Weight	< 4.2 kg
AC input connector	IEC320 / C14 (requires country-specific cord)
DC output connector	M8 threaded fasteners for ring terminals
Service port	Sealed (IP66) USB 2.0 Host Port (Type A) with dust cover
Mounting holes	Allows for safe installation on shelf, wall or bulkhead
Cooling	Normal operation in any orientation with passive cooling

Environmental	
Enclosure	IP66 (NEMA4)
Mechanical shock & vibration	MIL-STD-810E
Working Humidity	10 - 90 % RH non-condensing
Storage Humidity	5-90 % RH non-condensing
Operating temperature	-40°C to +65°C (-40°F to 149°F)
Storage temperature	-40°C to +85°C (-40°F to 185°F)



## 1200W CHARGER

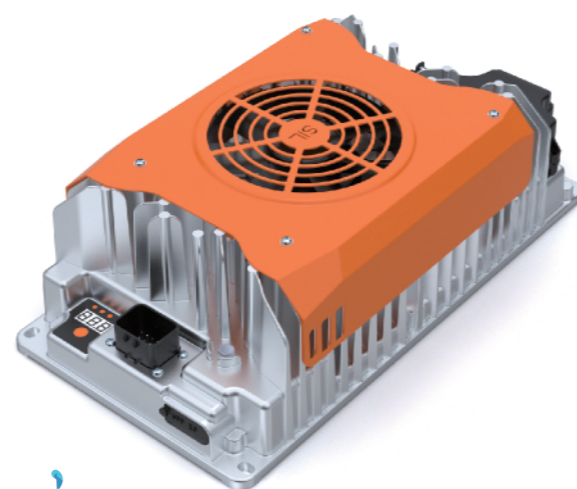
This 1200W charger can charge both lead-acid batteries (wet, AGM, gel) and lithium batteries, and can be used worldwide, with advantages of high charging efficiency and high reliability.

### Usability Features

- \*High voltage and surge protection.
- \*USB function for charge history, charge profile update and firmware upgrade.
- \*Digital display for AC voltage, charging status, battery status, error and fault.
- \*Auto-recharge for low voltage in maintenance mode.
- \*Built-in multiple charge profiles for different batteries.
- \*Optional CAN bus communication for machine integration or lithium BMS.
- \*Optional carrying handle.



### Application Field



## Model NO.:

SSC-1800WNO-01 CH480350A

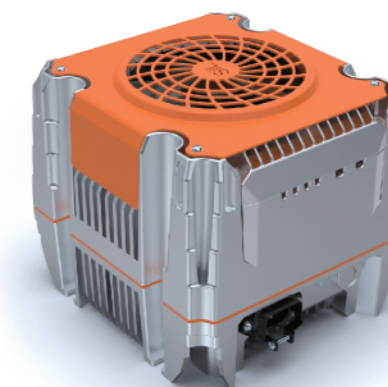
DC Output	48 VDC	
Maximum DC output voltage	68 V	68 V
Maximum DC output current	25 A	35 A
Maximum DC output power	1200W	1800W
Deep discharge recovery (minimum voltage)	6V	
Maximum C3 interlock signal current	5A	
Battery type	Lead acid (Wet / AGM / GEL), lithium	
Reverse polarity	Electronic protection with auto-reset	
Short circuit	Electronic current limit	

AC Input		
AC input voltage range	85-265 VAC	
Nominal AC input voltage	100-240 VAC	
Nominal AC input frequency	50 / 60 Hz	
Maximum AC input current	16A	
Nominal AC input current	16 A @ 100 VAC	16.0 A @ 120 VAC
	8.5 A @ 230 VAC	8.2 A @ 240 VAC
Power factor	>0.99 @ 120 VAC	>0.98 @ 230 VAC

Regulatory	
Efficiency	CEC-400-2017-002
Safety	UL1564, CSA 107.2, EN 60335-2-29, AZ/NZS60335 (RSM)
Emissions	FCC Part 15 / ICES 003 Class A, EN55011, EN 61000-6-4
Immunity	EN 61000-3-2, EN 61000-3-3, EN 61000-6-2

Mechanical	
Dimensions	203MM*180MM*165MM
Weight	< 4.5 kg
AC input connector	IEC320 / C14 (requires country-specific cord)
DC output connector	M8 threaded fasteners for ring terminals
Service port	Sealed (IP66) USB 2.0 Host Port (Type A) with dust cover
Mounting holes	Allows for safe installation on shelf, wall or bulkhead
Cooling	Air cooling

Environmental	
Enclosure	IP66 (NEMA4)
Mechanical shock & vibration	MIL-STD-810E
Working Humidity	10 - 90 % RH non-condensing
Storage Humidity	5-90 % RH non-condensing
Operating temperature	-40°C to +65°C (-40°F to 149°F)
Storage temperature	-40°C to +85°C (-40°F to 185°F)



## 1800W CHARGER

This 1800W charger can charge both lead-acid batteries (wet, AGM, gel) and lithium batteries, and can be used worldwide, with advantages of high charging efficiency and high reliability.

### Usability Features

- \*High voltage and surge protection.
- \*USB function for charge history, charge profile update and firmware upgrade.
- \*Digital display for AC voltage, charging status, battery status, error and fault.
- \*Auto-recharge for low voltage in maintenance mode.
- \*Built-in multiple charge profiles for different batteries.
- \*Optional CAN bus communication for machine integration or lithium BMS.
- \*Optional carrying handle.



### Application Field

